

Topology SW102
Display Guide



Topology SW102 Display Guide

Contents

PRODUCT DETAILS	2
PRODUCT NAME	2
FEATURES	2
DIMENSIONS & MATERIALS.....	2
<i>Materials</i>	2
<i>Dimensions</i>	2
ELECTRICAL SPECIFICATIONS	3
QUICK START GUIDE	3
FUNCTIONALITIES	1
POWER ON/ OFF	1
NAVIGATION	1
SWITCH DASHBOARD	2
ASSIST LEVEL OPERATING	2
DARK & LIGHT THEMED DASHBOARD.....	ERROR! BOOKMARK NOT DEFINED.
WALK ASSIST	3
SETTINGS.....	3
CLEAN TRIP DATA	4
ERROR CODES	4
INSTALLATION	5
COMPATIBILITY	ERROR! BOOKMARK NOT DEFINED.
PIN LAYOUT	5
CERTIFICATION.....	5



Product Details

Product Name

Intelligent OLED display, model : SW102

Firmware: CYCMotor Ltd specific

Features

- Minimalist design and process
- High brightness, high contrast 1.3-inch monochromatic OLED screen
- Excellent outdoor design with IP65 waterproof rating

Dimensions & Materials

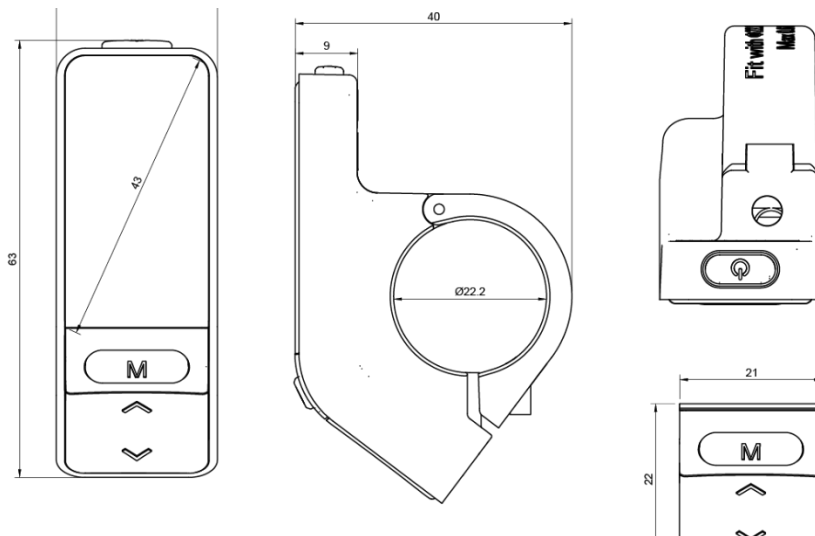
Materials

Product shell – ABS + PC plastic

Transparent window – 2.5D Tempered glass

Dimensions

L 110mm x W 68.2mm x H 68mm



The information contained in this document is derived from the TFT LCD Display Guide provided by Zhejiang Topology Intelligent Technology Co., Ltd. (otherwise known as Topology). All the information contained in this manual is published in good faith and for general information purpose only. Contact technical_support@cycmotor.com for further assistance.



Electrical Specifications

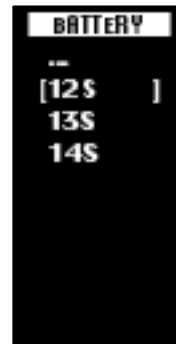
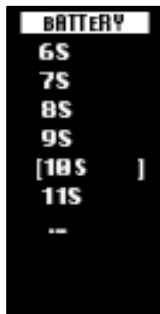
- Power supply: DC 36V/48V/52V
- Rated current: 12mA
- Shutdown leakage current: <1uA
- Screen specification: 1.3" OLED (64*128 dots)
- Communication method: UART (default)
- Operating temperature: -20°C ~ 60°C
- Storage temperature: -30°C ~ 80°C
- Waterproof level: IP65

Quick start guide

After unboxing and installing your CYC motor system, there are two main things you need to set up.

1. Change your Battery No. setting according to your rated voltage.

Within 15 seconds of turning on your display, long press the MENU button to enter the settings functions. Press UP/ DOWN to navigate the settings page & MENU to select.



6s = 22.2V
7s = 25.9V
8s = 29.6V

9s = 33.3V
10s = 36V
11s = 40.7V

12s = 44.4V
13s = 48V
14s = 52V

*Please note that 6s to 9s is not compatible with the CYC systems. This will be removed in future batches. Our apologies for the confusion.



2. Change your Wheel setting according to your bike's wheel size.



3. Now, you can set things up like your temperature and speed unit as well as your brightness level. Otherwise, you're good to go!

Functionalities

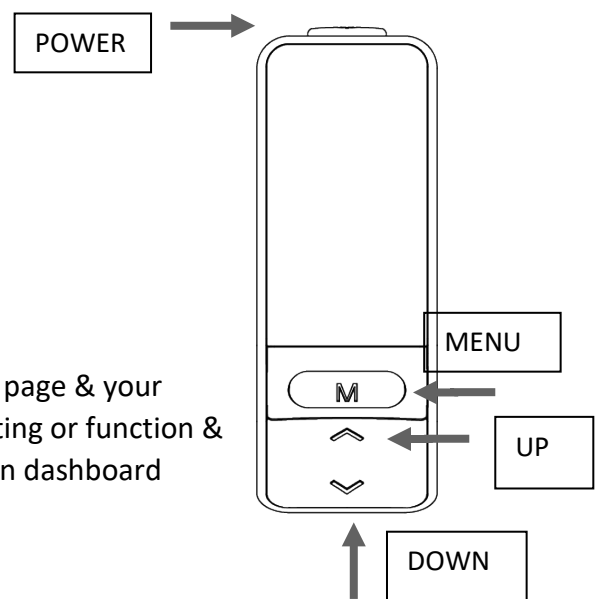
Power On/ Off

Press and hold the POWER button for 2 second to turn the display on/ off. The display will automatically shut down when there is no operation for a period of time.

Navigation

1. POWER
2. MENU
3. UP
4. DOWN

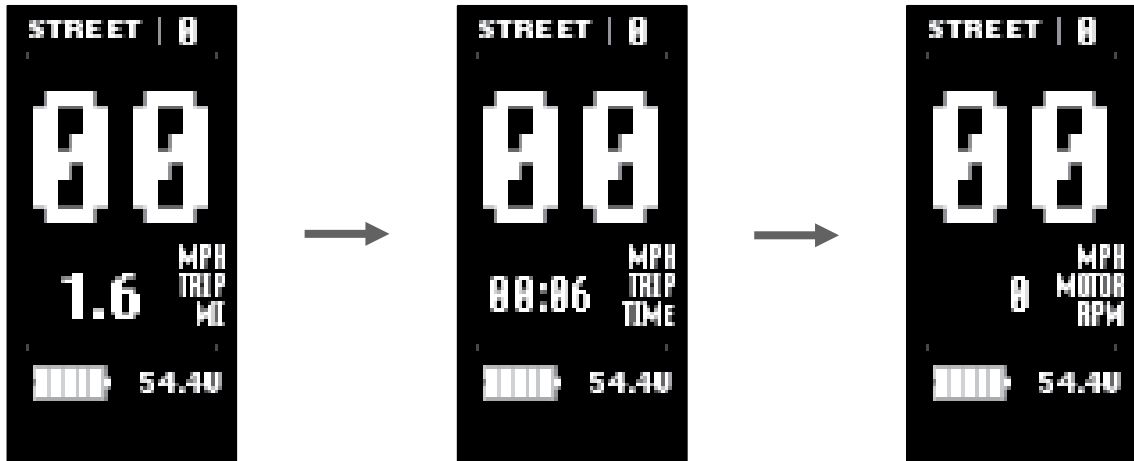
The MENU button is used to go into your main settings page & your clear data page. It is also used to enter and select a setting or function & finally, it's also used to switch between the various main dashboard information.





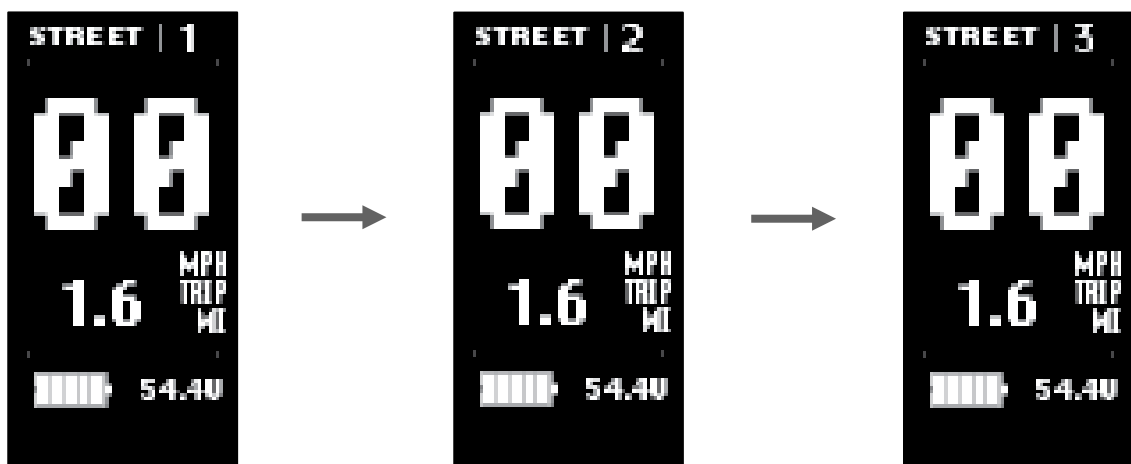
Switch Dashboard

Switch the main dashboard to display different information by pressing the MENU button.



Assist Level Operating

Press the UP/ DOWN button to change the assist level between level 1, 2, and 3. Note that "OFF" means no motor assistance will be given.

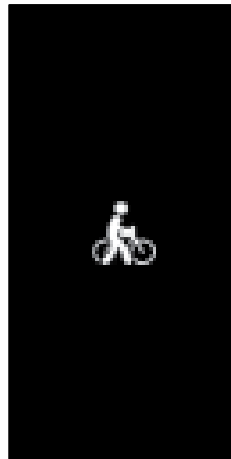




Walk Assist

Long press the DOWN button to activate walk assist. Note that it takes 3 seconds to activate & will deactivate immediately when the button is released.

Walk assist can only be activated if you are assist level 1, 2, or 3.



Settings

Long press the MENU button within 15 seconds of switching on the display to enter the “Settings” page. Note that once the system has been activated for longer than 15 seconds, you will need to restart the motor system to enter the settings menu.





Clean Trip Data

Wait 15 seconds after starting up the motor system to be able to enter the “Clean Data” menu. Long press the MENU button to clear the previous trip data. Please note that the trip data does not automatically clear once you restart the motor system. This is a manual process.



Error Codes

In certain circumstances, an error code may appear on your display. Contact technical_support@cycmotor.com for assistance.



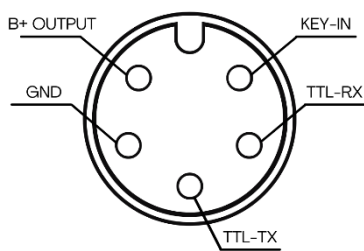


Installation

1. Open the display lock clip, set the display in the left handlebar (standard handlebar size $\Phi 22.2$). Adjust it in place and tighten the screw accordingly.

Note: Damage caused by excessive torque is not covered by the warranty.

Pin Layout



1. Red wire : Anode(36V to 72V)
2. Black wire : GND
3. Yellow wire : TxD (display -> controller)
4. Green wire : RxD (controller -> display)
5. Blue wire : Power cord to the controller

Certification

CE / IP65 (waterproof) / ROHS.

Be sure to contact technical_support@cycmotor.com if further assistance is needed.

THANK YOU!

The information contained in this document is derived from the TFT LCD Display Guide provided by Zhejiang Topology Intelligent Technology Co., Ltd. (otherwise known as Topology). All the information contained in this manual is published in good faith and for general information purpose only. Contact technical_support@cycmotor.com for further assistance.