



# **CYC X6 CONTROLLER EXTENSION WIRE & MOUNT**

INSTALLATION GUIDE

✉ [support@cycmotor.com](mailto:support@cycmotor.com)

☎ +852 3690 8938

To install the extension wire & mount, you will need the following components:

- 4x M5X10 Bolts
- 4x M3X6 Bolts

Please note that the sptes and images used in the below guide are for reference only. We strongly encourage you to email [technical\\_support@cycmotor.com](mailto:technical_support@cycmotor.com) if you are uncertain about any of the steps described below.



## STEP 1: INSTALL THE CONTROLLER MOUNT

Place the controller into the mount & tighten the four bolts on the controller mount.

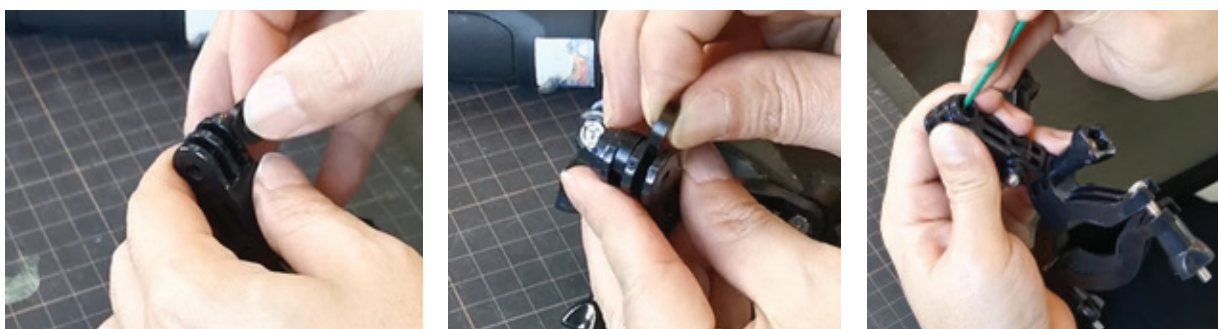


## STEP 2: ASSEMBLE THE EXTENSION PIECE

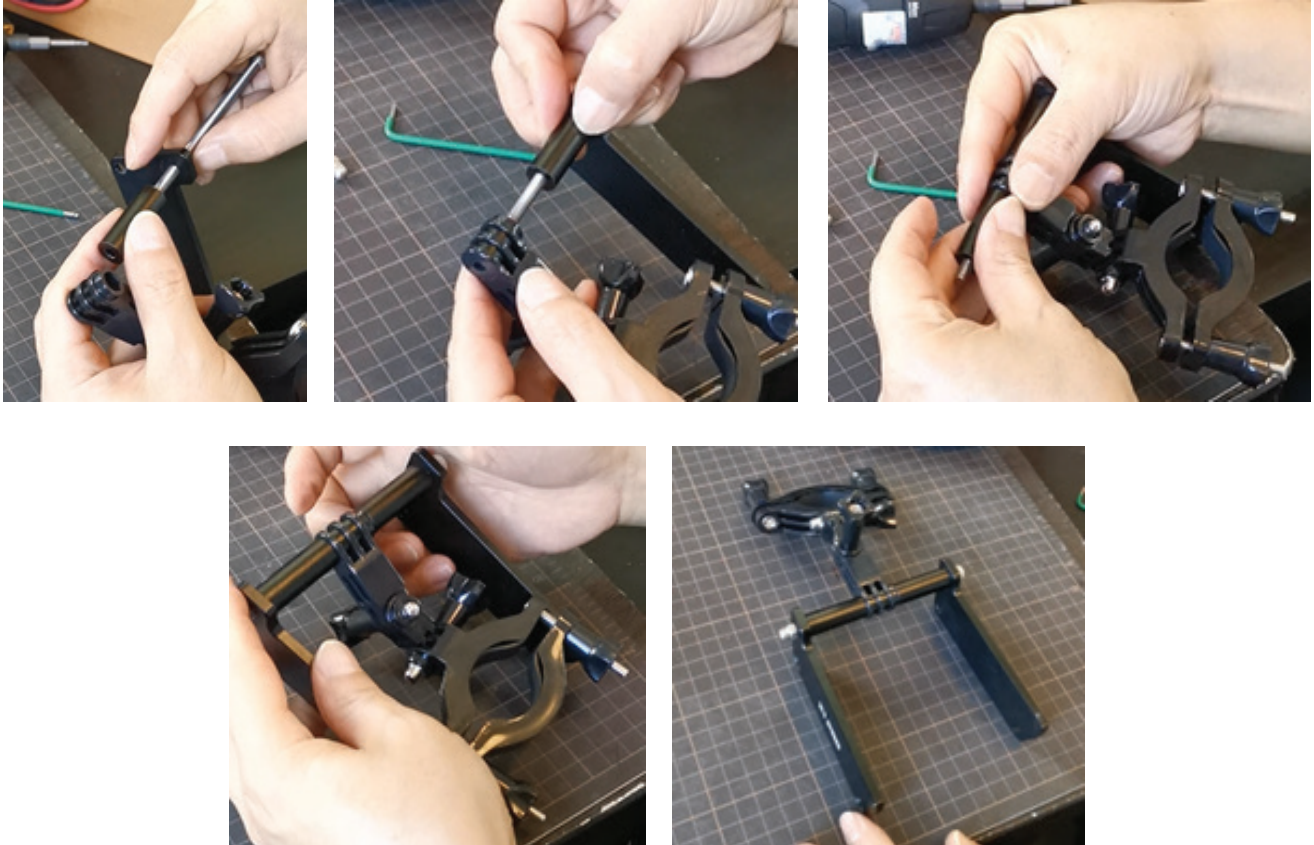
Install the clamp onto the extension piece & tighten the bolt accordingly.



Put the two spacers into the two gaps of the extension piece's top respectively. Use a tool to adjust the hole and adjust accordingly so the circular parts are aligned for the long screw to go through.



Insert the long screw to have it go through the right plate first and one-piece cylinder, then carefully when inserting through the extension piece. Afterwards, complete the insertion through the left plate and tighten the screw.



## STEP 2: INSTALL BOTH THE MOUNT & EXTENSION PIECE

Lastly, combine the mount & extension piece by tightening the four bolts accordingly and you're good to go!



Kindly contact [technical\\_support@cycmotor.com](mailto:technical_support@cycmotor.com) if further assistance is needed. Thank you!