

Magnetic Brake Sensors

Installation



CYC Motor Ltd
Hong Kong



How To Install Your Magnetic Brake Sensors

Requirements



1 to 4 wiring harness
full / half-twist / brake
throttle



Pair of magnetic with
sensors thumb

Please note that these images are for reference only. Installation should be done on the bike.

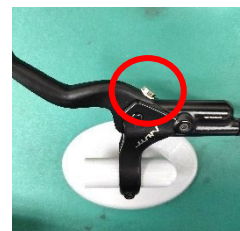
Step 1 – Connect the harness to the brake sensors

There are arrows for connection alignment on both the wiring harness and brake sensors



Step 2 – Place the magnet sticker on your brake handle & place the magnet on the sticker

The brake sensors & magnets should be placed right next to each other with the magnet on the inner edge of the brake lever.

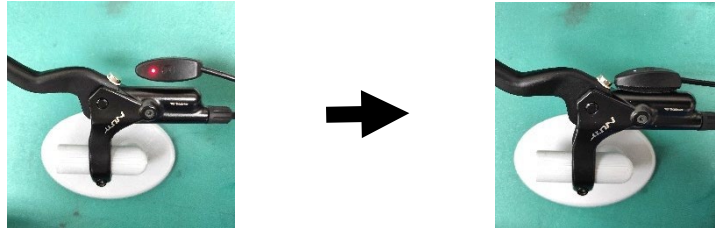




MAGNETIC BRAKE SENSORS

Step 3 – Take off red tape at the bottom of the sensor & stick the sensor right next to the magnet

When the kit is fully connected & switched on, the brake sensor will show a red light. As soon as the sensor is right next to the magnet, the light will turn blue.



Step 4 – Repeat these steps for the sensor on the other brake lever & test it



Not activated – Blue light



Activated – Red light

Please contact technical_support@cycmotor.com if further assistance is needed.