

Magnetic Speed Sensor

Installation



CYC Motor Ltd
Hong Kong



How To Install Your Magnetic Speed Sensor

Requirements



Speed Sensor for the X1 PRO



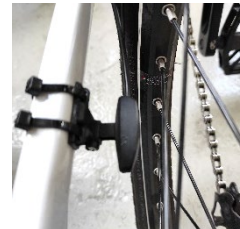
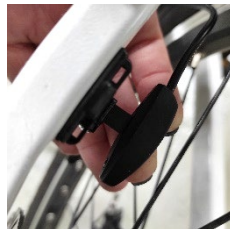
2x cable ties

Operating Notice

Right and left sides are determined by the bike handle; Right-hand corresponds to the right handle and vice-versa.

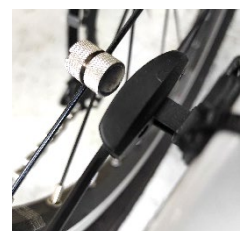
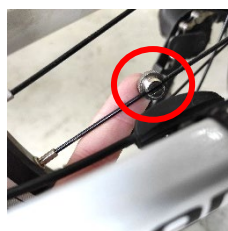
Step 1 – Place the speed sensor on the inside of the chainstay & fasten with cable ties

We recommend placing the sensor on the bottom left chainstay. The sensor must be placed with the cable facing toward the bottom bracket. Make sure to place the sensor not too close to the rear axle so that the cable can still reach the controller's cable.



Step 2 – Place the magnet directly opposite the sensor on a wheel spoke.

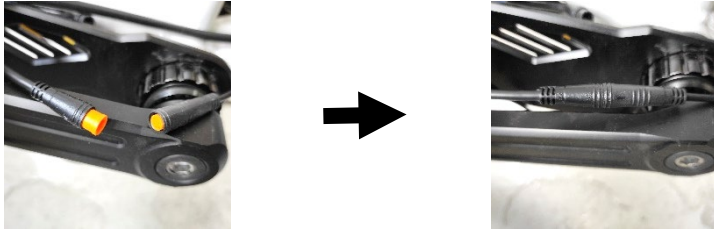
The magnet screws on with the wheel spoke placed in the groove. The magnet should be placed directly opposite the sensor as shown below. If not, the speed sensor might not pick up the signal or provide an inaccurate reading.





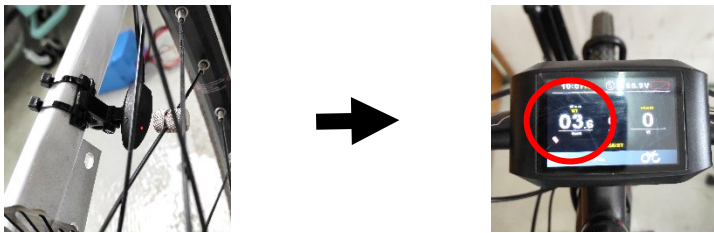
Step 3 – Connect the speed sensor cable to the controller & switch on your kit

The orange tip (male) wire from the controller, connects to the speed sensor. There are arrows for connection alignment on both the male and female side.



Step 4 – Test that it's working

Once your kit is switched on and the magnet is positioned correctly opposite the sensor, there will be a red light on the sensor. The red light will shine every time the magnet passed the sensor. Turn on your display and spin the rear wheel. If the reading picks up on the display and the red light is active when passing the magnet, then the speed sensor is working.



Please contact technical_support@cycmotor.com if further assistance is needed.